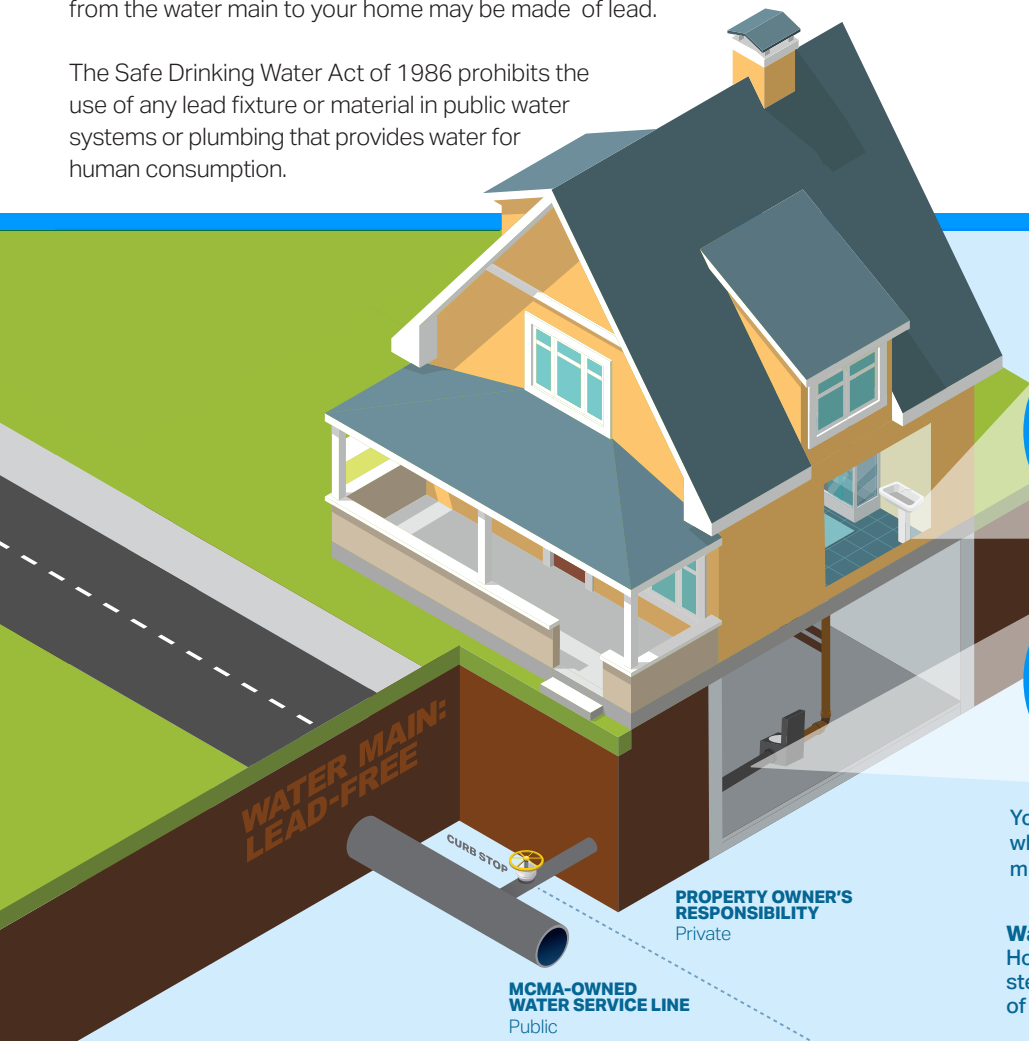


Checking your water distribution pipes for lead

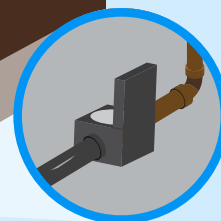


Mifflin County Municipal Authority water main system is virtually lead-free. However, the water service line (also called a service pipe) running from the water main to your home may be made of lead.

The Safe Drinking Water Act of 1986 prohibits the use of any lead fixture or material in public water systems or plumbing that provides water for human consumption.



Lead can also be found in older brass fixtures and valves and in old solder, where pipes are joined.



Possible Pipe Materials

LEAD

COPPER

GALVANIZED STEEL

PLASTIC/PEX

You can test the service line where it connects to the water meter in the basement.

Water Service Line (also called service pipe)

Homeowners' pipes may be made of lead, copper, galvanized steel or plastic. The homeowner is responsible for the portion of the service line that runs from the curb to the house.

FOLLOW THESE STEPS:

You will need:

- Key or a coin
- Strong refrigerator magnet

1. Find the water meter in your basement. Look at the pipe that comes through the outside wall of your home and connects to your meter.

2. Carefully scratch the pipe (like you would a lottery ticket) with a key or a coin. Do not use a knife or other sharp tool. Take care not to make a hole in the pipe. If the scratch turns a shiny silver color, it could be lead or steel.

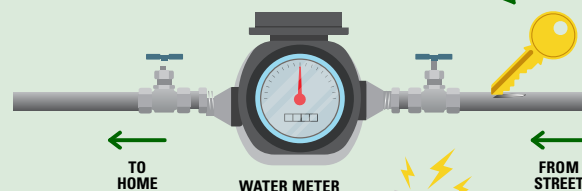
NOTE: If pipe is painted, use sandpaper to expose the metal first.

3. Place the magnet on the pipe. If a magnet sticks, it is a steel pipe.

Other ways you can check for lead:

Lead test kits can be purchased at your local hardware or home improvement store. These kits are used to test what the pipe is made from—not the water inside. Look for an EPA recognized kit.

Lead is dull, very soft, and will turn a shiny silver color when scratched.



Magnets will ONLY stick to steel. They will NOT stick to lead or copper.

A licensed and insured plumber can inspect your pipes and other plumbing for lead. Replacing an older brass faucet or valve may be a simple way to reduce the lead.



For more information about lead in your water, please visit:
www.epa.gov or www.cdc.gov

Mifflin County Municipal Authority

70 Chestnut Street
 Lewistown, PA 17044
mifflincountyh2o.com

Phone: (717) 248-0165
 Fax: (717) 248-0167